

Reasons for specification of Screedflo dB on this project:

- Speed of installation
- Loading of timber frame prior to dry lining
- Robustness of floor

Location:	Carnegie Village Campus, Leeds Metropolitan University
Client:	UPP
Timber frame:	Prestoplan
Screedflo dB installer:	SDP

When Shepherd Construction won the design & build contract for the new Carnegie Village campus at Leeds Metropolitan University, they were given the twin challenges of a very tight build schedule, combined with stringent environmental requirements.

The build programme called for 479 rooms in 11 blocks of student accommodation to be completed in just over 14 months.

Timber frame was the obvious choice for the structure of the buildings due to speed of building and its enhanced sustainability. When Prestoplan were awarded the timber frame contract, they recommended the use of the Screedflo dB acoustic floor system, which they had used successfully on a number of other projects. The system consists of layers of foam and fibreboard, topped with 40mm of Screedflo high performance anhydrite screed.

Screedflo dB proved to be the ideal solution for the party floors. Having recently achieved an A/A+ rating under the Green Guide assessment method, and easily achieving Robust Detail standard acoustic performance, it satisfied all of the environmental requirements.

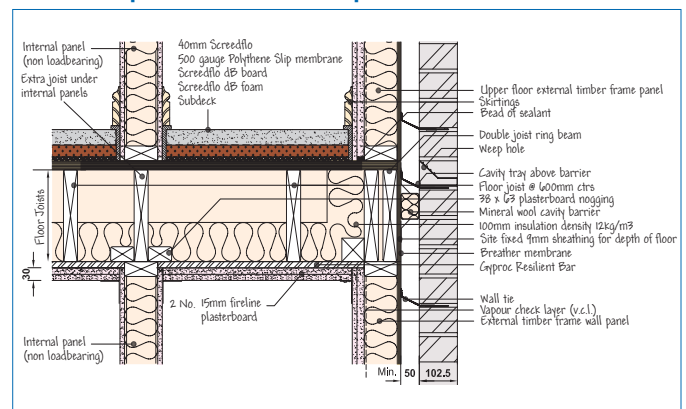
Additionally, with nearly 1500m² being installed every seven days, Shepherd Construction were able to reduce their overall build programme by nearly four weeks.

Steve Walker, Project Manager for Shepherd Construction, said *"The Screedflo dB system is proving to be fast to install, and fits in very well with our build programme. It's a clean system to install, and generates virtually no waste on site."*

Proof of the success of the combination of Prestoplan and the Screedflo dB system can be found in the recent award, by Shepherd Construction, of a similar sized project at the University of York.



Floor Joists parallel to the external panel



May/09