

Screedflo with underfloor heating



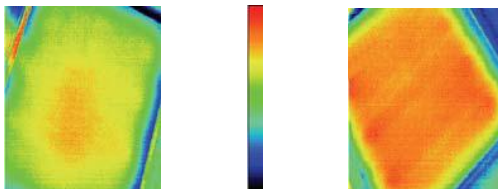
Description:

SCREEDFLO FLOWING SCREED is a blend of binder and selected aggregates mixed with clean water to produce a flowing pumpable screed, which is ideal for application over both warm water and electric under floor heating systems.

Key features:

- Produced to a controlled flowable consistency to fully encompass heating pipes.
- Elimination of voids resulting in uniform heat transfer and maximised thermal efficiency of the under floor heating system.
- Reduced screed depth when compared to traditional sand cement screeds minimising heat storage, resulting in a floor which responds rapidly to user requirements.
- Extremely low shrinkage - cannot curl and minimises the risk of cracking.
- Does not require reinforcement.
- Increased productivity - 500-1000 m² per day can be easily achieved.
- Heating systems can be commissioned in accordance with BS1264:2001-4 clause 4.4, as early as 7 days after application of the screed.
- Minimal thermal expansion (0.012mm/Mk).
- Excellent thermal conductivity (2.2W/Mk).

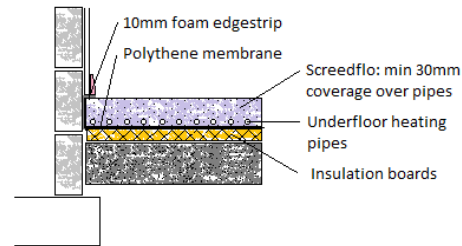
Sand & cement Surface temp. screedflo screed



Temperature across screed surface 80mins after turning underfloor heating on

- Environmentally friendly.
- No curing required.
- Ready for foot traffic in 48-72 hours.

Typical schematic installation:

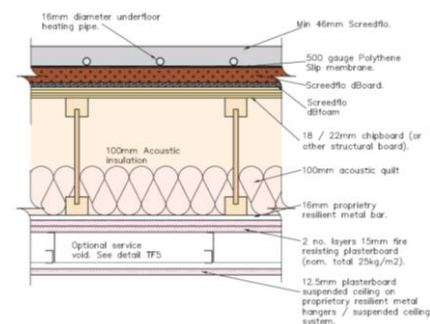


Key installation points:

- The area to be screeded must be made water tight to prevent leakage.
- The polythene slip membrane installed over the insulation must be overlapped and sealed to prevent loss of screed.
- Pipes or cables must be securely fixed at no greater than 300mm centres to prevent floatation and lifting during application of the screed.
- Best practice is to fill pipes prior to application of the screed to check for leaks, this also reduces the risk of pipes floating whilst the screed is being poured.
- Ideal flow 230-250mm measured using the DIN1060 flow ring.
- Minimum cover to pipes or cables must be 30mm.

Underfloor heating on joist floors:

- The use of Screedflo dB allows screed to be used on floors where joists have been used.
- Twice as efficient as alternative systems



| Installation type | Water Temp (°C) | Heat Output (W/m ²) |
|---|-----------------|---------------------------------|
| Screedflo dB - pipes at 300mm centres | 40 | 66 |
| Screedflo dB - pipes at 200mm centres | 40 | 93 |
| Plated systems - pipes at 300mm centres | 40 | 38 |
| Plated systems - pipes at 205.5mm centres | 40 | 46 |

Screedflo Ltd, Unit 8, West Station Business Park, Spital Road, Maldon, Essex. CM9 6FF

Tel: 01621 874781 Fax: 01621 854608 web: www.screedflo.co.uk e-mail: info@screedflo.co.uk